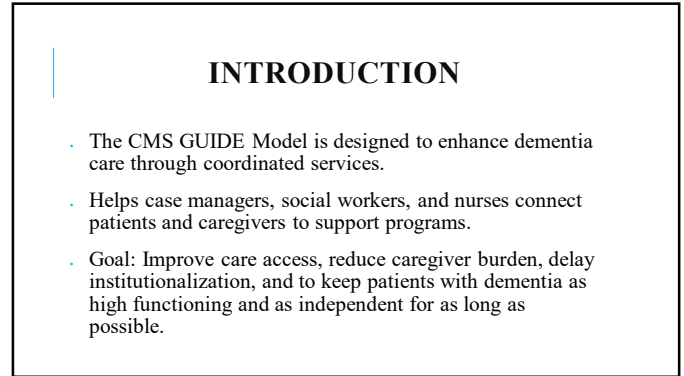
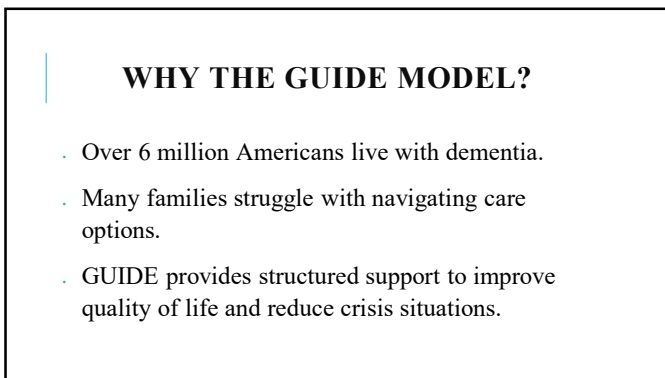


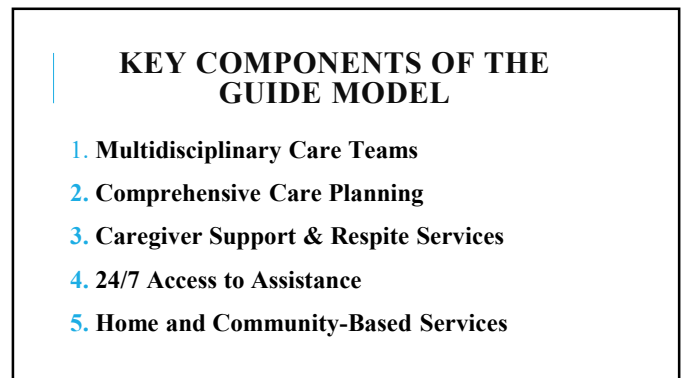
1



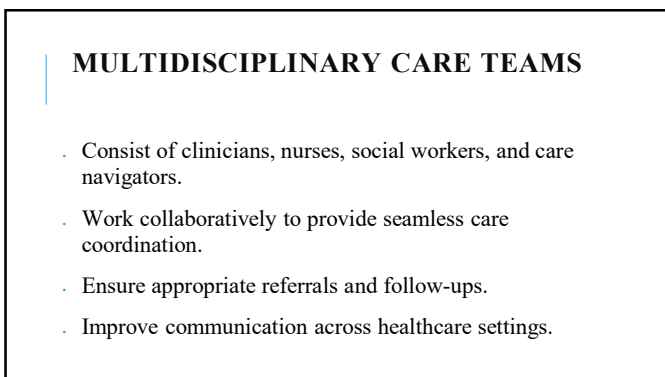
2



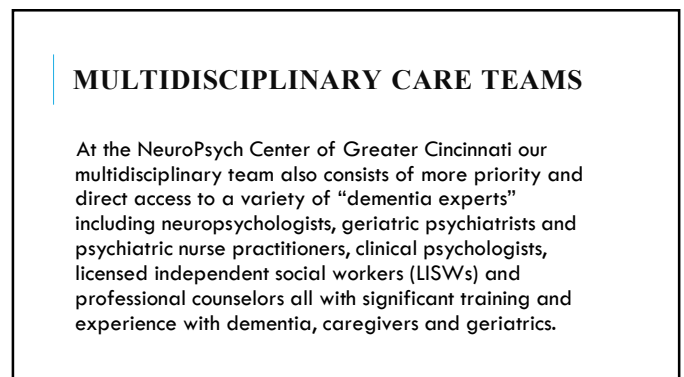
3



4



5



6

## COMPREHENSIVE CARE PLANNING

- . Develops personalized care plans for each patient.
- . Integrates medical, behavioral, and social support services.
- . Facilitates timely access to necessary resources.

7

## CAREGIVER SUPPORT & RESPITE SERVICES

- . Offers education and resources to help caregivers manage responsibilities.
- . Provides respite services to alleviate caregiver burnout.
- . Encourages caregiver well-being to improve patient outcomes.

8

## 24/7 ACCESS TO ASSISTANCE

- . Ensures dementia patients and caregivers receive continuous support.
- . Reduces unnecessary ER visits and hospitalizations.
- . Promotes safety and well-being at home.
- . Supports continuity of care at home.

9

## HOME AND COMMUNITY-BASED SERVICES

- . Assists patients in remaining at home longer.
- . Connects families to community programs like adult day centers and meal services.
- . Focuses on improving daily living and independence.

10

## RESPITE AND HOME MODIFICATION BENEFITS

- \*Eligible patients may receive up to **\$2,500 in respite services per year**, including:
  - . Adult day programs
  - . Non-medical companionship services
  - . Short-term respite stays in residential facilities
- \*Patients may also receive up to **\$1,000 for home modifications**, which can include:
  - . Installation of safety equipment (grab bars, ramps, etc.)
  - . Home modifications to improve accessibility
  - . Enhancements to support independent living
- \*These services help caregivers manage responsibilities while ensuring patient safety and comfort at home.

11

## PAYMENT AND REIMBURSEMENT

- . GUIDE operates using a value-based payment model ensuring quality care while controlling costs.
- . Encourages high-quality, coordinated care to improve patient well-being.
- . Supports providers in delivering efficient and effective care.
- . Encourages providers to deliver holistic care.

12

## WHO BENEFITS?

- **Patients:** Access to comprehensive dementia care services.
- **Caregivers:** Support resources and respite care to prevent burnout.
- **Providers:** Structured framework to improve care coordination.

13

## HOW YOU CAN REFER PATIENTS

- Identify eligible patients with dementia who could benefit from GUIDE services.
- Educate caregivers on available support options.
- Collaborate with GUIDE care teams to facilitate seamless enrollment.

14

## PATIENT ELIGIBILITY FOR THE GUIDE MODEL

- Must be a **Medicare beneficiary** diagnosed with dementia.
- Must live in a **home or community-based setting** (not in a nursing home).
- Patients and caregivers (if available) must be willing to engage with the GUIDE care team for support and services.

15

## WHAT IF YOU HAVE PATIENTS WITHOUT TRADITIONAL MEDICARE?

GUIDE Model is part of NCGC's Dementia Support Complete (DSC) and Healthy Brains programs

- Program essentially provides all of the services outlined for the GUIDE Model including 24/7 availability
- Paid for by most insurance plans including Medicare Advantage plans (copays do apply)
- Patients not eligible for respite or home modification payments

16

## SUMMARY & NEXT STEPS

- GUIDE Model offers comprehensive dementia care solutions.
- Case managers, social workers, and nurses play a key role in referring patients.
- Encourage participation by informing families about available support.

17

## Q&A

- Open for discussion and questions.
- Contact information: NeuroPsych Center of Greater Cincinnati (NCGC)
  - (513) 563-0488
  - [info@cincinnati geriatri cpsych.com](mailto:info@cincinnati geriatri cpsych.com)

18